

A420503 Engine block heater, 200 series 2

- With this instruction motor heater can be assembled on a Avant 200 series loader
- This is a retrofit instruction

A420503 Engine block heater, 200 series 2

- Before assembling make sure that you find all of the components listed below in your retrofit kit
 - 74571 x1 Pipe clamp
 - 72317 x1 Hexagonal nut M6
 - 71680 x2 Washer M6
 - 72117 x1 Hexagonal screw M6x16
 - 73122 x1 Washer M8
 - 73039 x1 Hexagonal screw M8x16
 - 64470 x1 Engine block heater assembly kit
 - 65749 x1 Engine block heater
 - 65809 Heat sink compound

A420503 Engine block heater, 200 series 2

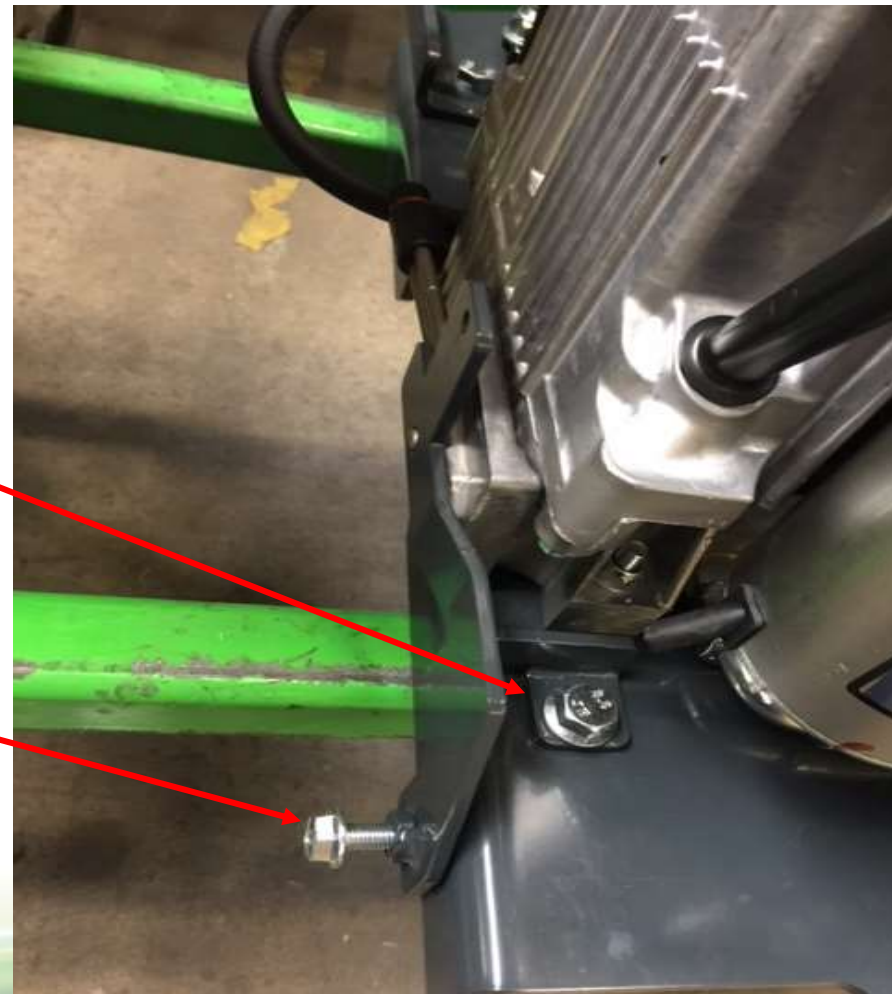
- The idea of motorwarmer is heat up the motor oil to help starting the motor
- This will increase motor's lifetime and decreases emissions coming from motors coldstarting
- Motorwarmer is installed to engines oilpan

A420503 Engine block heater, 200 series 2

- Remove loaders right side cover and seat base
- Wash loader to make the engine block clean for the assembly

A420503 Engine block heater, 200 series 2

- Remember put the white paste to heater element and engine block to lead the heat
- With this bolt the bracket is attached to loader
- With this bolt the element can be tightened against the engine block



A420503 Engine block heater, 200 series 2

- Fuel line will be routed through the clamp to avoid hot heater element
- Heater element attached against the engine block



A420503 Engine block heater, 200 series 2

- Engine block heater cable will be routed from back of the loader to engine
- Route it in front of the variable pump
- When it's in front of the engine attach cables connector heater element
- Attach the cable to loaders hydraulic hoses with zip ties
- Plug for block heater
- Attach the grounding wire to OIL-stick attaching screw



A420503 Engine block heater, 200 series 2

- When everything is attached and working you can attach removed covers back on their place