

## A35886 Boom self levelling, hydraulic Avant R20-28 series

- With this instruction the hydraulic boom self levelling can be assembled on a Avant 500 loader
- This is a retrofit instruction

## A35886 Boom self levelling, hydraulic Avant R20-28 series

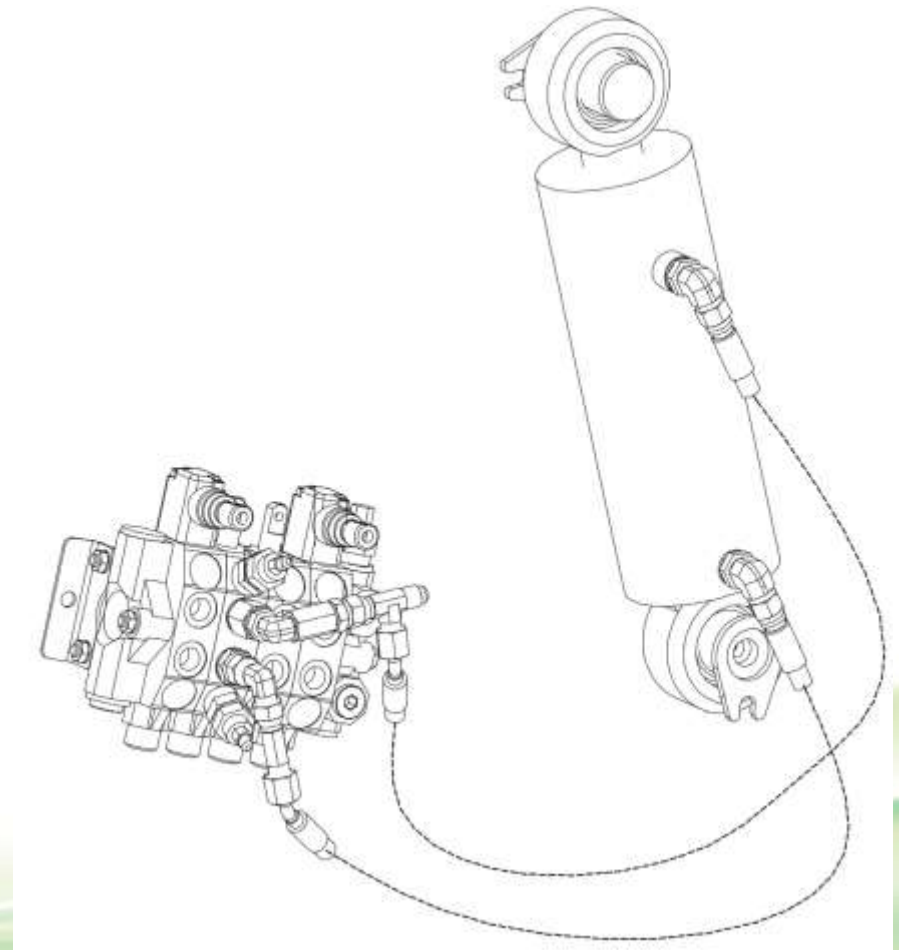
- Before assembling make sure that you find all of the components listed below in your retrofit kit
  - A47920 Hydraulic cylinder
  - 64044 x2 Elbow fitting 90°
  - A47640 x2 Hydraulic hose
  - A47041 x2 Pin
  - 64324 Reducer fitting
  - 64078 x2 L-fitting frame
  - 64043 Elbow fitting 90°
  - 64078 Elbow fitting 90°
  - 64195 Test fitting
  - 64059 Basic fitting

## A35886 Boom self levelling, hydraulic Avant R20-28 series

- Lift the boom up and support it by service support
- Remove loaders front covers and right side cover
- Wash the loader so you don't contaminate the hydraulic system
- Valve and parallel cylinders place need to be washed properly

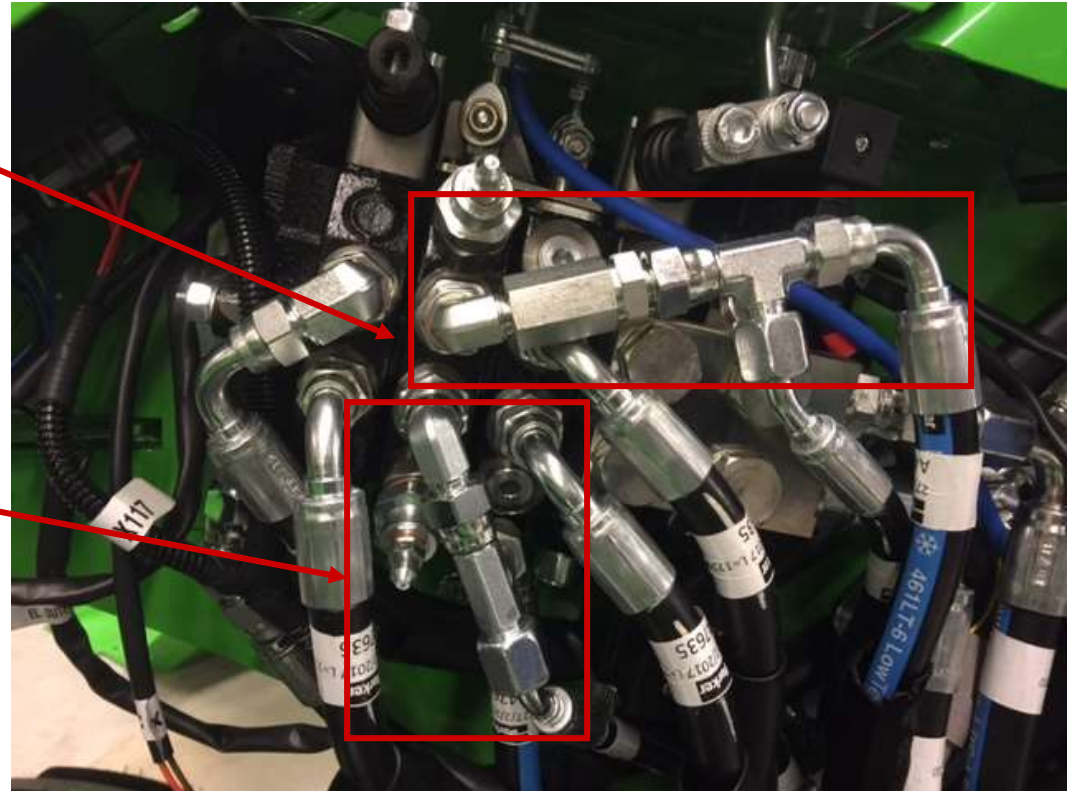
## A35886 Boom self levelling, hydraulic Avant R20-28 series

- Control valve 3D-model
- Boom self levelling cylinder works with lift cylinder



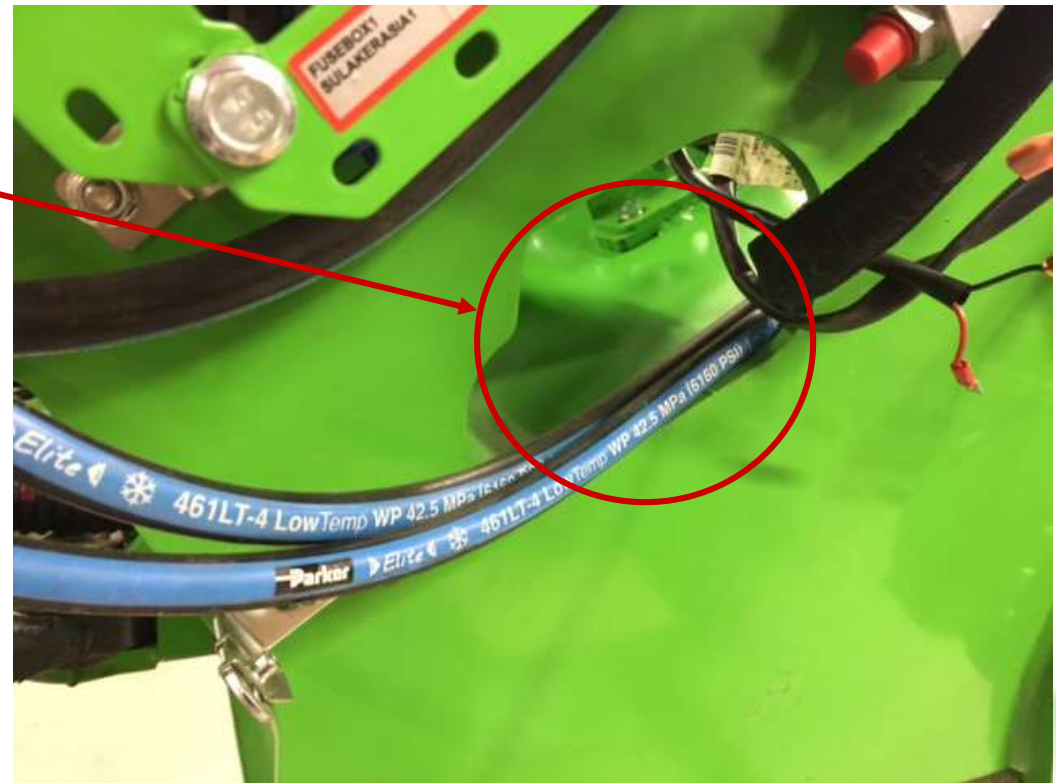
## A35886 Boom self levelling, hydraulic Avant R20-28 series

- You need to attach four new fittings to bucket tilt blocks upper fitting:
  - Elbow fitting
  - L-fitting frame
  - Basic fitting
  - Test fitting
- To lower fitting you need to attach two new fittings
  - Elbow fitting
  - L-fitting frame



## A35886 Boom self levelling, hydraulic Avant R20-28 series

- Hoses for hydraulic self levelling kit need to route under the hydraulic oil cooler to front frame
- The hoses are routed same way as the other hoses of the loader



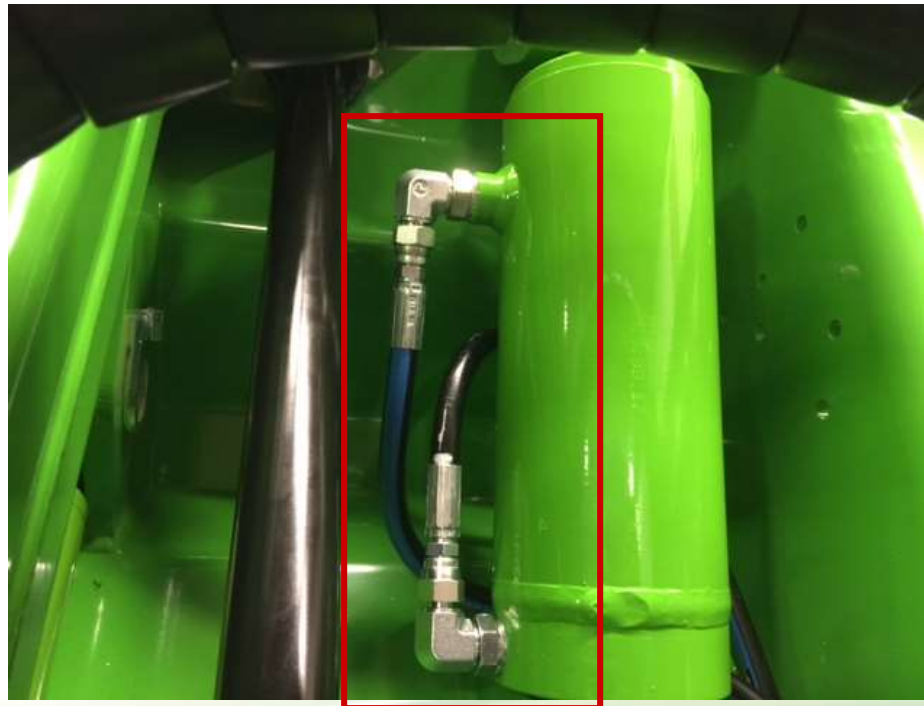
## A35886 Boom self levelling, hydraulic Avant R20-28 series

- Parallel cylinder needs to be attached to front fram and to boom as in the picture with attaching pins



## A35886 Boom self levelling, hydraulic Avant R20-28 series

- The hoses which you attached to control valve needs to be attached to parallel cylinder in the right order
  - From control valves upper fitting to cylinder upper fitting
  - From control valves lower fitting to cylinder lower fitting





## A35886 Boom self levelling, hydraulic Avant R20-28 series

- When you have attached everything and fittings are tightened you can bleed the system
- For bleeding the system you need to start the loader and lift the boom to maximum position and then bring it down, do this few times and you have bled the self levelling kit
- After the bleeding is done and there are no oil leaks you can attach the removed covers back on their places